



ALUMINUM

FOR HIGH - VALUE
A LEADING GLOBAL SUPPLY CHAIN



RESOURCE ABILITY

Allied with top aluminum mills in China, Hainason always delivers high value aluminum with a stable lead time, consistent quality and competitive prices to our partners.



PROCESSING ABILITY

With our established capability in processing and stocking ability for our strategic partners we are constantly looking to improve and grow our capabilities to further enhance our customers outcomes.



LOGISTIC ABILITY

With an established background working in the shipping and logistics industry, Hainason has a complete supply chain management offer.



ADVANTAGE

A LEADING GLOBAL
ALUMINUM
SUPPLY CHAIN



OUR PRODUCTS
AEROSPACE AND AVIATION

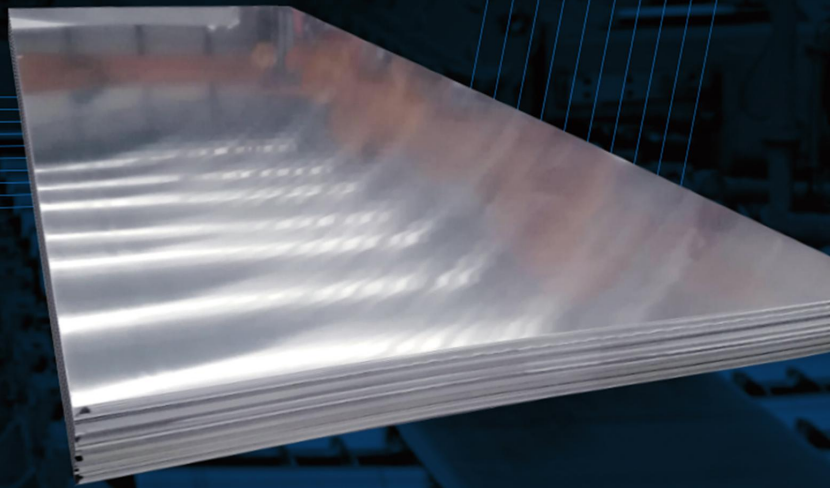


ALUMINUM
PRODUCTS



- AERO PLATES
- AERO SHEETS
- AERO SEAT
- INTERIOR DECORATION
- UNIT LOAD DEVICE

ALUMINIUM ALLOY SHEETS FOR AEROSPACE



Chemical Composition

(wt%)

Alloy	Si	Fe	Cu	Mn	Mg	Ni	Cr	Zn	Ti	Standard
2024	0.50	0.50	3.8~4.9	0.3~0.9	1.2~1.8	—	0.10	0.25	0.15	GB/T 3190 EN 573 ASTM B209 AMS
2A12	0.50	0.50	3.8~4.9	0.3~0.9	1.2~1.8	0.10	—	0.30	0.15	
2017	0.2~0.8	0.7	3.5~4.5	0.4~1.0	0.4~0.8	—	0.10	0.25	0.15	
2A14	0.6~1.2	0.7	3.9~4.8	0.4~1.0	0.4~0.8	0.10	—	0.30	0.15	
5A06	0.40	0.40	0.10	0.5~0.8	5.8~6.8	—	—	0.20	0.02~0.10	
7075	0.40	0.50	1.2~2.0	0.30	2.1~2.9	—	0.18~0.28	5.1~6.1	0.20	
7A09	0.50	0.50	1.2~2.0	0.15	2.0~3.0	—	0.16~0.30	5.1~6.1	0.10	
7A04	0.50	0.50	1.4~2.0	0.2~0.6	1.8~2.8	—	0.10~0.25	5.0~7.0	0.10	

Specification

Alloy	Temper	Thickness(mm)	Width (mm)
2A12	T4/ T3	0.3~4.0	1000~2600
2024			
2017			
2A14			
5A06	0	0.5~4.0	1000~2600
7A09	T6	0.5~4.0	1000~2600
7A04			
7075			

Mechanical Properties

Alloy	Temper	thickness (mm)	Rm(Mpa) Tensile Strength		Rp0.2(MPa) Yield Strength		A50% Breaking Elongation		Standard
			Standard	ALG Performance	Standard	ALG Performance	Standard	ALG Performance	
2A12	T4	0.3~3.5	≥ 405	415~430	≥ 270	285~300	≥ 13	15~20	GB/T 3880 EN 485 ASTM B209
2024	T4	0.3~3.5	≥ 425	430~450	≥ 275	280~310	≥ 15	18~21	
2017	T4	0.3~3.5	≥ 390	395~405	≥ 245	255~270	≥ 14	19~23	
2A14	T4	0.5~3.5	≥ 395	415~430	≥ 240	255~270	≥ 14	18~22	
5A06	O	0.5~3.5	≥ 315	330~360	≥ 155	175~205	≥ 16	19~23	
7075	T6	0.5~3.5	≥ 540	550~570	≥ 460	480~500	≥ 6	11~15	
7A09	T6	0.5~3.5	≥ 480	550~570	≥ 400	480~500	≥ 7	11~15	
7A04	T6	0.5~3.5	≥ 480	565~595	≥ 400	495~510	≥ 7	10~14	



ALUMINIUM ALLOY PLATES FOR AEROSPACE APPLICATION

Chemical Composition

(wt%)

Alloy	Si	Fe	Cu	Mn	Mg	Cr	Zn	Zr	Ti	Standard	Remarks
7050	0.12	0.15	2.0~2.6	0.10	1.9~2.6	0.04	5.7~6.7	0.08~0.15	0.06	GB/T 3190 EN 573 ASTM B209 AMS	
7150	0.12	0.15	1.9~2.5	0.10	2.0~2.7	0.04	5.9~6.9	0.08~0.15	0.06		
7055	0.10	0.15	2.0~2.6	0.05	1.8~2.3	0.04	7.6~8.4	0.08~0.25	0.06		
7A85	0.05	0.08	1.2~2.0	0.10	1.2~2.0	0.05	7.0~8.2	0.08~0.16	0.05		
7075	0.40	0.50	1.2~2.0	0.30	2.1~2.9	0.18~0.28	5.1~6.1	-	0.20		
7A04	0.50	0.50	1.4~2.0	0.20~0.60	1.8~2.8	0.10~0.25	5.0~7.0	-	0.10		
7A09	0.50	0.50	1.2~2.0	0.15	2.0~3.0	0.16~0.30	5.1~6.1	-	0.10		
6061	0.40~0.80	0.70	0.15~0.40	0.15	0.80~1.2	0.04~0.35	0.25	-	0.15		
2024	0.50	0.50	3.8~4.9	0.30~0.90	1.20~1.80	0.10	0.25	-	0.15		
5083	0.40	0.40	0.10	0.40~1.0	4.0~4.9	0.05~0.25	0.25	-	0.15		
2219	0.20	0.30	5.8~6.8	0.20~0.40	0.02	-	0.10	0.10~0.25	0.02~0.10		V0.05~0.15
2A14	0.6~1.2	0.70	3.9~4.8	0.40~0.10	0.40~0.80	-	0.30	-	0.15		
5A06	0.40	0.40	0.10	0.50~0.80	5.8~6.8	-	0.20	-	0.02~0.10		

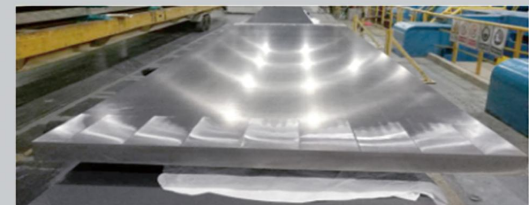
Specification

Alloy	Temper	Thickness (mm)	Width (mm)
7050	T7451	4~260	1200~3800
	T7651	4~260	1200~3800
7150	T7751	4~100	1200~3800
7055	T7751	4~60	1200~3800
7A85	T7651	4~260	1200~3800
	T7452	4~260	1200~3800
7075	T651	4~260	1200~3800
	T7651	4~260	1200~3800
	T7351	4~260	1200~3800
7A04	T651	4~260	1200~3800
7A09	T651	4~260	1200~3800
6061	T651	4~260	1200~3800
2024	T351	4~260	1200~3800
5083	H116/H321	4~260	1200~3800
2219	T62(MCS)	4~260	1200~3800
	T6(CS)		
	T87/C10S		
2A14	T6	4~260	1200~3800
5A06	H112	4~260	1200~3800

Note: Above are typical specifications,
ALG can also offer customized products per customer requirements.

Mechanical Properties

Alloy	Temper	Direction	thickness (mm)	Rm(Mpa) Tensile Strength		Rp0.2(MPa) Yield Strength		A50% Breaking Elongation		Standard
				Standard	ALG Performance	Standard	ALG Performance	Standard	ALG Performance	
7050	T7451	L	6~203	≥ 503	515~535	≥ 434	450~470	≥ 9	11.5~15.5	AMS 4050
	T7451	LT		≥ 503	515~535	≥ 434	450~470	≥ 8	11~13.5	
	T7451	ST		≥ 469	500~520	≥ 407	420~440	≥ 3	8~10.5	
	T7651	LT	6~76	≥ 524	550~570	≥ 455	480~500	≥ 9	10~12.5	AMS 4201
7150	T7751	LT	6~100	≥ 517	585~590	≥ 565	550~555	≥ 6	10~12.5	AMS 4252
7055	T7751	LT	6~38	≥ 614	635~635	≥ 586	595~610	≥ 8	8~10.0	AMS 4206
7A85	T7651	LT	100~178	≥ 503	530~550	≥ 462	490~510	≥ 5	8.5~12.5	AMS 4329
	T7452	LT	120~265	≥ 495	520~545	≥ 450	485~500	≥ 5	10~12.5	XSJ/B8Q-76
7075	T651	LT	6~260	≥ 540	570~590	≥ 460	495~515	≥ 8	10~13.5	GB/T 3880
	T7651	LT	6~102	≥ 538	550~560	≥ 462	480~490	≥ 9	10.5~12.5	AMS 4045
	T7351	LT	6~102	≥ 476	500~520	≥ 393	420~435	≥ 7	10~12.5	AMS 4078
7A04	T62	LT	6~80	≥ 490	600~610	≥ 410	535~540	≥ 3	10~12.5	GJB 2662
7A09	T62	LT	6~80	≥ 490	550~570	≥ 410	495~500	≥ 3	14.5~17.5	GJB 2662
6061	T651	LT	6~260	≥ 262	320~360	≥ 241	285~330	≥ 10	10~14.5	AMS 4113
2024	T351	LT	6~102	≥ 441	460~495	≥ 290	320~340	≥ 12	12.5~21.5	AMS-QQ-A-250/4
5083	H116/H321	LT	6~80	≥ 305	350~360	≥ 215	230~245	≥ 10	13.5~17.5	GB/T 3880
2219	T62(MCS)	LT	12~100	≥ 370	420~430	≥ 250	285~230	≥ 7	14~15	GJB 390
	T6(CS)	LT		≥ 425	420~450	≥ 315	350~365	≥ 7	11~16.5	GJB 390
	T87/C10S	LT		≥ 440	450~475	≥ 350	360~390	≥ 6	8~13.5	GJB 390
2A14	T6	LT	20~120	≥ 450	455~470	≥ 390	400~440	≥ 5	5~10	GJB 390
5A06	H112	LT	13~200	≥ 295	330~380	≥ 135	145~265	≥ 6	15~30	GJB 2662



ALUMINUM ALLOY PRODUCT FOR AERO SEAT AND AVIATION INTERIOR DECORATION SERIES



Chemical Composition 1 on

(wt%)

Alloy	Si	Fe	Cu	Mn	Mg	Cr	Zn	Ti	Zr	Standard
2024	0.50	0.50	3.8-4.9	0.30-0.9	1.2-1.8	0.10	0.25	0.15	—	GB/T 3190 EN 573 ASTM B209 AMS
5052	0.25	0.40	0.10	0.10	2.2-2.8	0.15-0.35	0.10	—	—	
5754	0.40	0.40	0.10	0.50	2.6-3.6	0.30	0.20	0.15	—	
6061	0.40-0.8	0.7	0.15-0.40	0.15	0.8-1.2	0.04-0.35	0.25	0.15	—	
6082	0.7-1.3	0.50	0.10	0.4-1.0	0.6-1.2	0.25	0.20	0.10	—	
7075	0.40	0.50	1.2-2.0	0.30	2.1-2.9	0.18-0.28	5.1-6.1	0.20	—	
7055	0.10	0.15	2.0-2.6	0.05	1.8-2.3	0.04	7.6-8.4	0.06	0.08-0.25	

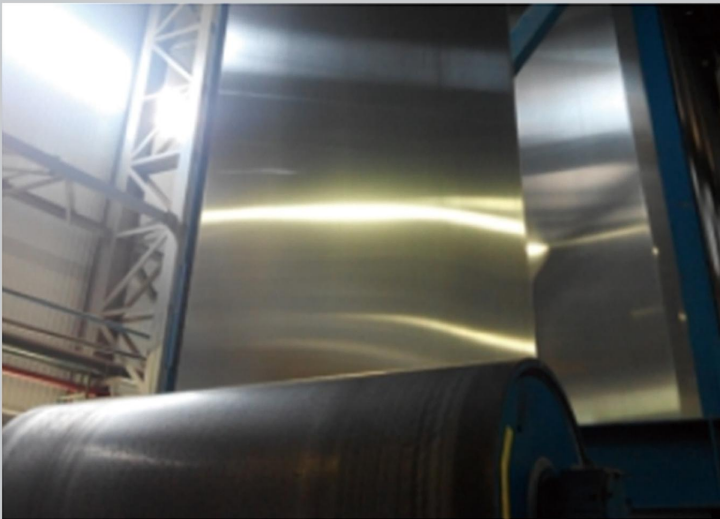
ALG provides one-stop R&D solution based on special requirements.

Specification Sheets



Alloy	Temper	Thickness(mm)	Width(mm)
2024	O/T3/T4	0.3~3.5	1000~2600
5052	H22/H32	0.3~3.5	1000~2600
5754	O/H111/H22	0.3~3.5	1000~2600
6061	O/T4/T6	0.3~3.5	1000~2600
6082	T4/T6	0.3~3.5	1000~2600

Extrusion Specification



Alloy	Temper	Thickness(mm)	Width(mm)
2024	T4/T3510/T3511	15~60	250~500
6061	T6/T6510/T6511	15~60	250~500
7075	T6/T6510/T6511	15~60	250~500
7055	T76511	15~60	250~500

The weight of 6061 alloy shall be over 1.6kg/m.

Mechanical Properties Sheets

Alloy	Temper	Rm(Mpa) Tensile Strength		Rp0.2(MPa) Yield Strength		A50% Breaking Elongation		Standard
		Standard	ALG Performance	Standard	ALG Performance	Standard	ALG Performance	
2024	O	≤221	200~215	≤97	80~90	≥13	25~30	AMS-QQ- A-250/4
	T3	≥435	455~470	≥290	310~325	≥14	20~25	
	T4	≥428	440~460	≥276	290~310	≥14	20~25	
5052	H22	214~262	220~240	≥160	175~190	≥12	15~25	AMS-QQ- A-250/8
	H32	214~262	220~240	≥160	175~190	≥12	15~25	
5754	O	190~240	200~215	≥80	110~130	≥18	25~35	EN485
	H111	190~240	200~215	≥80	110~130	≥18	25~35	
	H22	220~270	230~250	≥130	150~190	≥11	15~25	
6061	O	≤151	130~145	≤83	65~75	≥19	25~35	AMS-QQ-A-250/11
	T4	≥207	240~270	≥110	160~200	≥18	20~30	AMS 4026
	T6	≥290	320~360	≥241	260~290	≥10	15~25	AMS 4027
6082	T4	≥205	230~250	≥110	130~150	≥15	25~35	EN485
	T6	≥310	325~350	≥260	280~300	≥10	15~25	

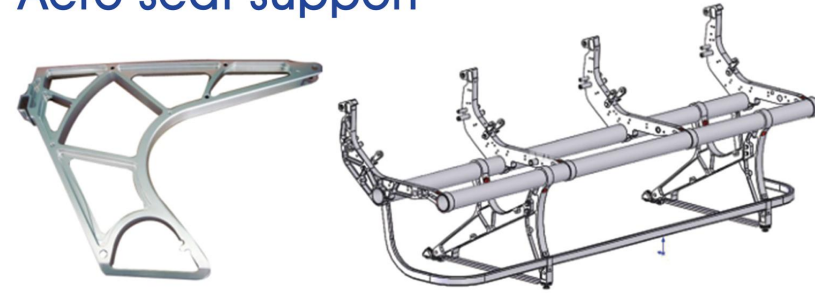
Extrusion

Alloy	Temper	Rm(Mpa) Tensile Strength		Rp0.2(MPa) Yield Strength		A50% Breaking Elongation		Standard
		Standard	ALG Performance	Standard	ALG Performance	Standard	ALG Performance	
2024	T4	≥393	420~455	≥262	280~310	≥10	15~20	AMS-QQ- A-200/3
	T3510	≥393	420~455	≥290	310~350	≥12	15~20	
	T3511	≥393	420~455	≥290	310~350	≥12	15~20	
6061	T6	≥262	280~300	≥241	260~280	≥8	15~20	AMS-QQ- A-200/8
	T6510	≥262	280~300	≥241	260~280	≥8	15~20	
	T6511	≥262	280~300	≥241	260~280	≥8	15~20	
7075	T6	≥538	560~590	≥483	510~540	≥7	10~15	AMS 4154
	T6510	≥538	560~590	≥483	510~540	≥7	10~15	
	T6511O	≥538	560~590	≥483	510~540	≥7	10~15	
7055	T76511	≥627	640~670	≥593	610~630	≥9	11~15	AMS 4336

Remark: The sheet and extrusion products can also be supplied according with relevant AMS and ASTM specification.

Typical Applications

Aero seat support



Aero cabinet



Airline food trolley



ALUMINIUM ALLOY PRODUCT FOR UNIT LOAD DEVICE

Chemical Composition

(wt%)

Alloy	Si	Fe	Cu	Mn	Mg	Cr	Zn	Ti	Zr	Standard
7021	0.25	0.40	0.25	0.10	1.2~1.8	0.05	5.0~6.0	0.10	0.08~0.18	GB/T 3190 EN 573 ASTM B209 AMS
7075	0.40	0.50	1.2~2.0	0.30	2.1~2.9	0.18~0.28	5.1~6.1	0.20	—	
6061	0.40~0.8	0.70	0.15~0.40	0.15	0.8~1.2	0.04~0.35	0.25	0.15	—	
6013	0.6~1.0	0.50	0.6~1.1	0.2~0.8	0.8~1.2	0.10	0.25	0.10	—	
5182	0.20	0.35	0.15	0.2~0.5	4.0~5.0	0.10	0.25	0.10	—	
7020	0.35	0.40	0.20	0.05~0.5	1.0~1.4	0.1~0.35	4.0~5.0	—	—	
6351	0.7~1.3	0.50	0.10	0.4~0.8	0.4~0.8	—	0.20	0.20	—	

ALG provides one-stop R&D solution based on special requirements.



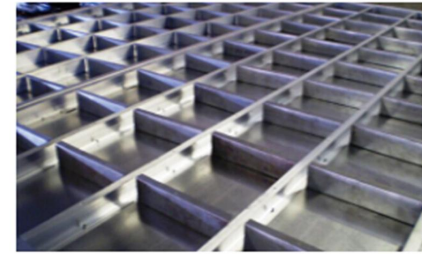
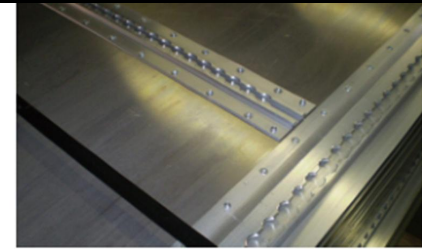
Performance Control Features

Applications	Index Class	Quality Control Key Point
Body Plate	Class A	Flatness, Dimension Tolerances, Mechanical Properties
	Class B	Surface quality
Floor	Class A	Flatness, Dimension Tolerances, Mechanical Properties
	Class B	Surface quality
Tray	Class A	Flatness, Dimension Tolerances, Mechanical Properties
	Class B	Surface quality
Structural Profile	Class A	Geometric Tolerance, Mechanical Properties
	Class B	Surface quality

Our Technical Advantages High Strength-Toughness

Mechanical Properties Comparison

Type	Alloy	Temper	Rm(Mpa) Tensile Strength		Rp0.2(MPa) Yield Strength		A50% Breaking Elongation		Standard
			Standard	ALG Performance	Standard	ALG Performance	Standard	ALG Performance	
Type	5182	H19	≥380	395~415	≥320	350~370	≥1	8~10	EN 485
	6061	T6	≥290	320~340	≥240	270~290	≥6	13~15	EN 485
	6013	T6	≥359	360~380	≥317	320~340	≥8	8~10	ASTM B209
	7021	T6	≥400	490~510	≥350	450~470	≥7	13~15	EN 485
	7075	T6	≥540	570~590	≥460	480~500	≥6	13~15	EN 485
Excution Profiles	6351	T6	≥290	300~320	≥255	270~290	≥10	12~14	ASTM B221M
	7020	T6	≥350	400~420	≥290	330~350	≥8	14~16	GB/T 3191



High Precision Excellent Flatness

Material Tolerance Index

Inspection item	Tolerance	Standard
Thickness Tolerance	±0.15mm (Box Sheet) ±0.10mm (Base Sheet) ±0.15mm (Tray)	EN485
Length and Width Tolerance	±1.5mm	
Diagonal Deviation	≤5mm	
Transverse Unevenness	≤10mm	
Longitudinal Unevenness	≤10mm	
Partial Unevenness	≤0.4%	
Lateral Curvature	≤6mm	

Ultra-Wide

Sheets and Plates max width up to 2650mm

Specifications

Type	Application Part	Alloy	Temper	Thickness (mm)	Remark
Sheets and Plates	Side Sheet	2024	H19	0.5~1.5	Width 1250~2650mm Length 1300~6500mm
		6061	T6	0.5~1.5	Width 1250~2650mm Length 1300~6500mm
		6013	T6	0.5~1.5	Width 1250~2650mm Length 1300~6500mm
		7021/7075	T6	0.5~4.5	Width 1200~2600mm Length 1200~6000mm
	Bottom Sheet	7021/7075	T6	0.5~4.5	Width 1200~2600mm Length 1200~6000mm
		Tray	7021/7075	T6	0.5~4.5
Profile	Edge Profile	—	—	—	—

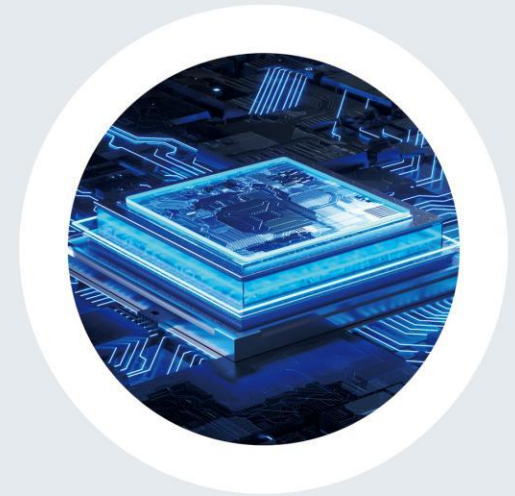
ALG provides one-stop R&D solution based on special requirements

ALG provides one-stop R&D solution based on special requirements.



ALUMINUM PRODUCTS

OUR PRODUCTS SEMICONDUCTOR



6N61 SP PROPERTIES
6N61 SP APPLICATION
6N61 SP PRODUCT ANTI-FORGERY

6N61 SP PROPERTIES

Reasonable alloy composition design

6N61 SP is a new 6061 aluminum alloy material independently developed by our company in the semiconductor field. Through precise alloy composition design and strict process control/the material is backward compatible and can be perfectly applied to the pan-semiconductor field such as liquid crystal and photovoltaic/and its alloy composition meets the 6061 alloy standard of the aluminum industry in various countries/and also meets the requirements of the S2 standard of Hua Chuang.

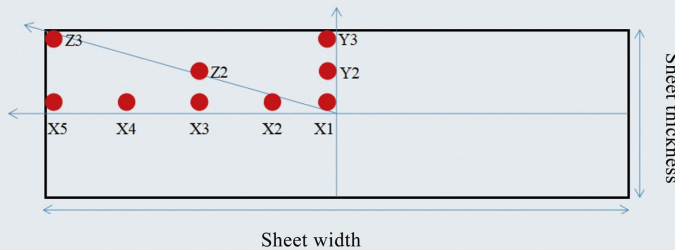
The alloy composition is the most direct and critical link that affects the anodic oxidation performance.

Standard	Si	Fe	Cu	Mn	Mg	Cr	Zn	Ti
National standard/American standard/European standard	0.4-0.8	≤ 0.7	0.15-0.4	≤ 0.15	0.8-1.2	0.04-0.35	≤ 0.25	≤ 0.15
XX S2 level	0.5-0.7	≤ 0.15	0.2-0.3	≤ 0.15	0.8-1.2	0.15-0.35	≤ 0.06	≤ 0.05
6N61 SP (Actual measurement)	0.60	0.10	0.22	0.029	0.98	0.22	0.025	0.022

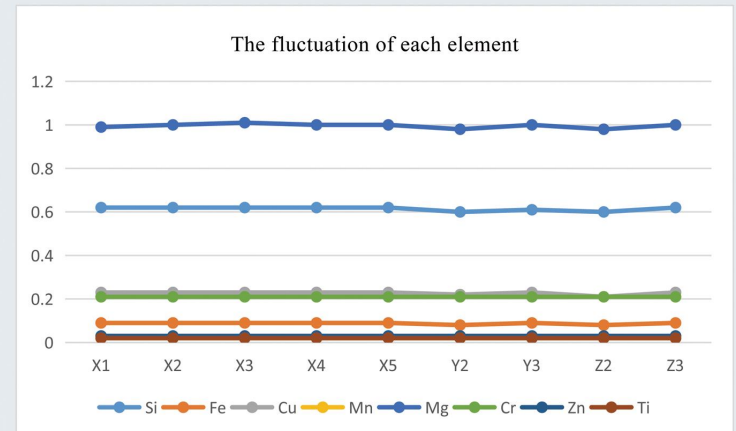
6N61 SP PROPERTIES

High Uniformity of alloy composition

Brand	Thickness/m m	Alloy	Chemical composition , wt.%								
			Si	Fe	Cu	Mn	Mg	Cr	Zn	Ti	Al
National standard/American standard/European standard		6061	0.4~0.8	≤ 0.7	0.15~0.4	0.15	0.8~1.2	0.04~0.35	0.25	0.15	/
ALG	150 (Actual measurement)	6N61 SP	0.61	0.10	0.22	0.029	0.98	0.20	0.025	0.022	/



The distribution of alloy composition of 6N61 SP alloy sheet at different positions shows that the alloy sheet product has a high uniform composition distribution. High uniform component distribution is an important guarantee of product consistency.



Alloying composition distribution of 6220547 lot

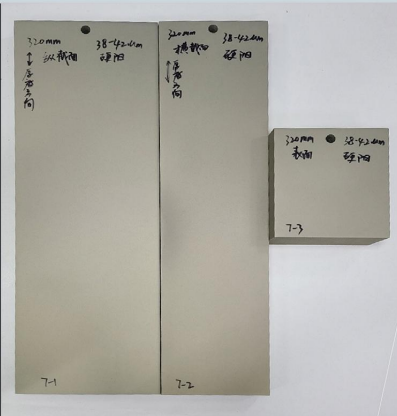
6N61 SP PROPERTIES

Mechanical properties meet multinational standards

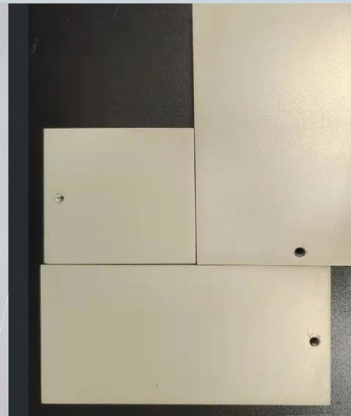
Brand	Thickness/mm	Alloy/Temper	Rp0.2/MPa	Rm/MPa	A50mm/%	Hardeness/HV
Standard: National,American/ Japanese/European	≤250	6061-T6/T651	≥ 240	≥ 290	≥ 5	/
European Standard	≤250~ 400	6061-T6	≥ 220	≥ 260	/	/
ALG	150	6N61 SP-T651 (Medium-thick plate)	302	326	11.5	105
	130		302	322	12.5	105
	175		301	324	12	104
	100		298	322	12	103
	70		294	318	12.5	104
	30		295	319	12.0	105
	280	6N61 SP-T6 (Extra-thick plate)	293	338	9.5	104
	320		282	325	11	102
	363		280	329	11.5	101
	368		285	323	12	102
	405		258	297	7.5	97

6N61 SP has stable mechanical properties. The Rp0.2 is 290~310MPa/Rm is 310~330MPa/elongation is 11~13%/hardness is 100~110HV.

Anodizing properties



Hard anodized surface treatment for the thickness of 320 mm/Film thickness 38~42um



Hard anodized surface treatment for the thickness of 150 mm/Film thickness 42~44um



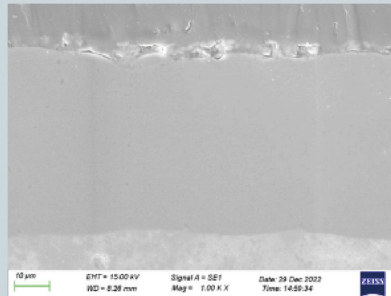
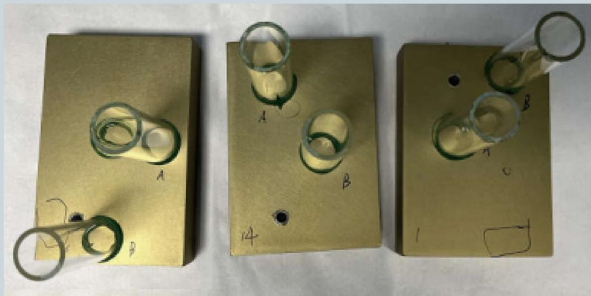
Hard anodized surface treatment for the thickness of 10 mm/Film thickness 40um

PROPERTIES
6N61 SP

6N61 SP has excellent anodizing properties. The anodic oxide film has uniform color and no obvious color difference in the thickness direction (that is/no waist line).

Anodic oxide film properties

Sheet thickness	Oxide film thickness/mm	Dielectric Breakdown Voltage /V	5%HCl Bubble Test/min
13	51.6	1795	6h30
25	52.5	2050	6h10
70	53.4	1600	4h30
100	53.2	1610	4h20
150	52.6	1660	4h15



6N61 SP has excellent anodizing properties.

The breakdown voltage \geq 1600V/5%HCl Bubble Test \geq 4h for the oxide film /which is compact/uniform and complete.

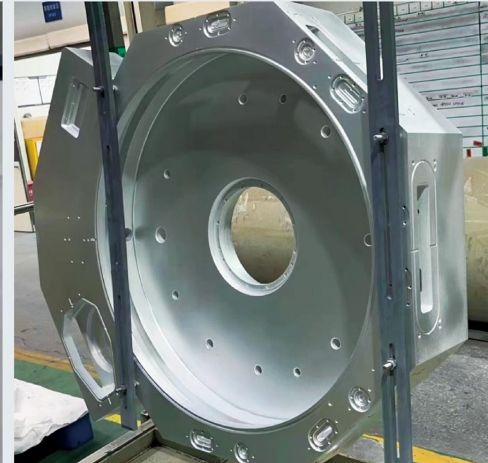
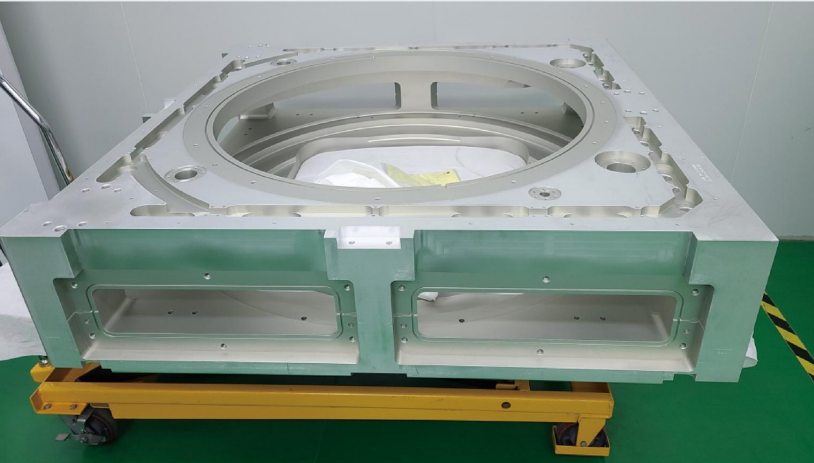
Product application

6N61 SP APPLICATION



User	Alloy	Progress
NAURA	6N61 SP	<ul style="list-style-type: none">★ 2021.12/the materials passed the first round of Naura verification/obtained the supplier access qualification/and began to promote the localization of some parts of the materials.★ 2023.3.16/6N61 SP product passed the review certification.★ 2023.1.16 –present/it has been widely used in small process etching machines.

Application example



6N61 SP APPLICATION



ALUMINUM

PRODUCTS

OUR PRODUCTS

AUTOMOBILE SHEET



ABS
STRUCTURE
EXTERIOR AND INTERIOR DECORATION
EV BATTERY

AUTO BODY COVERINGS

Chalco Ruimin is the main supplier of the domestic automotive aluminum plate industry, with the body covering parts (4 doors and 2 covers) inside and outside the stable product supply ability, has been listed in a number of OEMs material suppliers



ALLOY	Application
6014/6016	Covering parts outer plate
5182	Covering parts inner plate
6014/6016	Fender

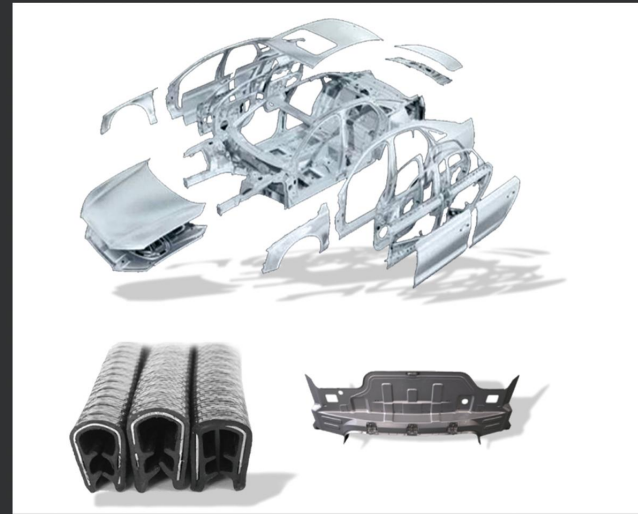
No	Item	Alloy	End use	Type	Temper	Gauge (mm)	Width(mm)	Surface	Surface treatment	Surface oiling	Application
1	RS521	5052	structural parts	ST	H32	0.5~4.0	1000~2200	MF/EDT	Ti-Zr	dry/wet oil	parts
2	RU525	5182	inner/structural parts	RSS	O/H111	0.5~4.0	1000~2200	MF/EDT	Ti-Zr	dry/wet oil	Hood, doors, rear panel
3	RS520	5754	inner/structural parts	ST	O/H111	0.5~4.0	1000~2200	MF/EDT	Ti-Zr	dry/wet oil	Inner plate/structural parts
4	RE617	6014	outer pannel	IH	T4P	0.5~4.0	1000~2200	MF/EDT	Ti-Zr	dry/wet oil	Outer panels of hood, doors, trunk, side girth, fender
5	RE620	6016	outer pannel	IH	T4P	0.5~4.0	1000~2200	MF/EDT	Ti-Zr	dry/wet oil	Hood, doors, trunk, side girth, fender outer panels
6	RS620	6016	inner/structural parts	IBR	T4P	0.5~4.0	1000~2200	MF/EDT	Ti-Zr	dry/wet oil	Structural parts, covering parts (hood, door, etc.) inner plate
7	RE660	6451	outer pannel	HS	T4P	0.5~4.0	1000~2200	MF/EDT	Ti-Zr	dry/wet oil	Roof cover outer panel
8	RS660	6451	structural/ Strengthen parts	HS	T4P	0.5~4.0	1000~2200	MF/EDT	Ti-Zr	dry/wet oil	Door frame, top cover reinforcing frame and other internal structural parts, reinforcing parts
9	RS680	6111	structural/ Strengthen parts	HS	T4P	0.5~4.0	1000~2200	MF/EDT	Ti-Zr	dry/wet oil	Beam, longitudinal beam and other internal structural parts, strengthening parts

No	Item	ALLOY	Temper	Type	Rm/MPa	Rp0.2/MPa	A50/%	Ag/%	N _{10%~20%}	R _{10%}	YPE	△R	Flanging factor	Paint brush line grade	BH2
1	RS521	5052	H32	ST	225	170	17.0	12.0	0.18 ^a	1.35	/	/	/	/	/
2	RU525	5182	O/H111	RSS	274	125	27.0	24.0	0.33	0.84	0.0	/	/	/	/
3	RS520	5754	O/H111	ST	232	104	25.0	22.0	0.28	0.80	/	/	/	/	/
4	RE617	6014	T4	IH	206	103	25.0	21.0	0.26	0.78	/	≤0.40	≤0.40	secondary	220
5	RE620	6016	T4	IH	220	110	26.0	23.0	0.30	0.67	/	≤0.40	≤0.50	secondary	223
6	RS620	6016	T4	IB	230	115	29.1	24.7	0.28	0.81	/	/	/	/	227
7	RE660	6451	T4	IH	240	130	27.9	25.5	0.29	0.78	/	/	≤0.60	secondary	250
8	RS660	6451	T4	IB	246	133	29.1	23.2	0.25	0.93	/	/	/	/	242
9	RS680	6111	T4	IB	284	142	29.2	20.8	0.27	0.85	/	/	/	/	287

Note: The typical mechanical properties of 6XXX alloy are measured at 7 days after solution

BODY STRUCTURAL PARTS

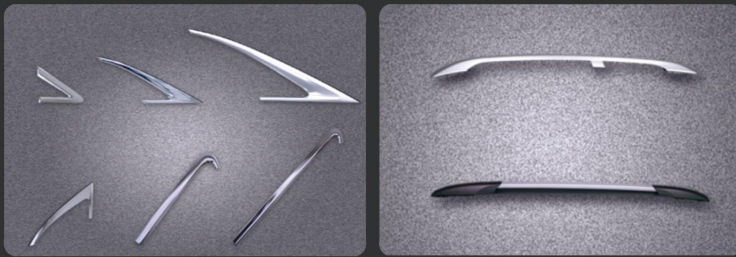
Chalco Ruimin can provide high dimensional accuracy, stable material performance and good surface quality, and can design aluminum plate strips for automotive structural parts to meet customer needs, which are applied to automotive body structural parts, automotive heat shield, SUV foot pedals, vacuum booster shells, automotive seals, etc.



ALLOY	Application
5052/5182/3104	Car heat shield
5052/5754	SUV foot treadle
5754/5083/5182	Vacuum booster
5754	Seals for cars

AUTO DECORATING PARTS

Chalco Ruimin can provide automobile decorative aluminum with good anodizing quality and excellent mirror effect, which is applied to automobile exterior trim and interior trim.



ALLOY	Application
1070A/5005/5505	exterior decoration parts
8014	exterior decoration parts

EV BATTERY SHEET

The new revolutionary batteries are an integral part of EV and HEV, which are replacing steel with aluminium for a superior lightweight solution. With capability of slitting and cutting in our metal center, we are able to process coils into small sizes used for component in battery pack.



OUR PRODUCTS
MARINE PLATE
DNV/ABS/CCS/BV/LR/KR

Our product comes in a large range of length and width options, high strength, guaranteed properties, easy forming and welding, excellent corrosion resistance, good consistent shape, superior surface quality, high fatigue strength and high dimensional precision. All our Marine plate is DNV/ABS/LR/BV/KR/CCS certified.



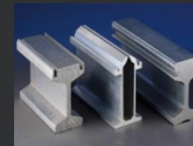
MARINE PLATE SPECIFICATIONS



Alloy	Temper	Thickness	Width
5083	O/H111/H112/ H116/H321	3~10mm	≤2600mm
5383			
1561			
5059			
5083	O/H111/H112/ H116/H321	10~50mm	≤3600mm
5383			
1561			
5059			

ALUMINUM EXTRUSION FOR MARINE

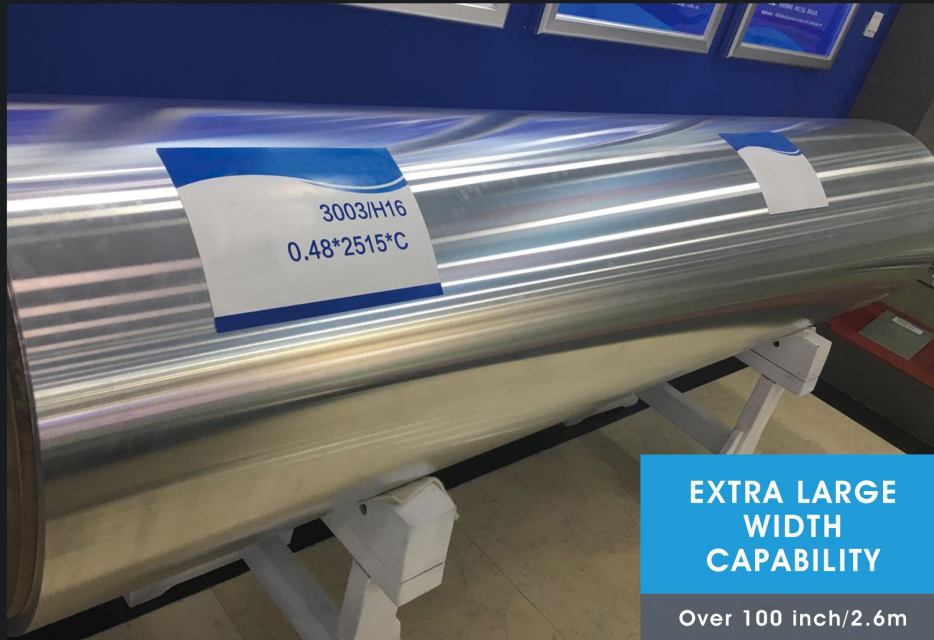
We can supply all series of aluminum alloy products. The main products are 2xxx, 5xxx, 6xxx, and 7xxx alloy including all tubes (outer diameter from 6mm to 200mm, wall thickness from 0.5mm to 35mm), bars (diameter from 6mm to 180mm), profiles and exclusive products etc.





TANK TRUCK

Predominantly used in truck bodies, tank shells, tank ends, partition board, dashboards and fuel tanks. The products have strong corrosion resistance, good welding performance, high fatigue strength and high dimensional precision.



**EXTRA LARGE
WIDTH
CAPABILITY**

Over 100 inch/2.6m

WIDE COILS

GREATER WIDTH FOR GREATER POSSIBILITIES

Wide coils, mill-finished or pre-lacquered, may be used in a variety of applications, such as roofs or side panels. Our large width capability enables to cover most applications and thus reduce assembly workload.

WIDE COILS PRODUCT PORTFOLIO – MILL FINISH

Product	Yield strength R _{p0.2} [MPa / ksi] min. or range	Tensile strength R _m [MPa / ksi] min. or range	Elongation [min. %]	Maximum width [mm / inch]	Thickness range [mm / inch]
3003	117-150 / 17-22	138-210 / 20-30	1-8	2,600 / 102	0.5-6.4 / 0.02-0.25
3005	175 / 25	195-240 / 28-35	1-2	2,600 / 102	0.5-2.0 / 0.02-0.08
5052	159-303 / 23-44	214-300 / 31-44	1-11	2,575 / 101	0.6-9.5 / 0.02-0.37
5754	220-250 / 32-36	265-305 / 38-44	1-3	2,555 / 100	0.6-2.0 / 0.02-0.08

Product characteristics depend on temper and size. For further dimensions and to define your exact need, contact your local Hainason representative.